



## SHARE, SAVE, SIMPLIFY

Maryfi is an easy to use software router for Windows 7 computers. After downloading and installing the lightweight application, Maryfi utilizes your computers' built in Wi-Fi card to wirelessly share any available Internet connection.

# Maryfi

## How To Use

MarySoft Company

---

# What is Maryfi

Maryfi is a free and easy to use software router for Windows 7 computers. With Maryfi, users can wirelessly share any Internet connection: a cable modem, a cellular card, or even another Wi-Fi network. Other Wi-Fi enabled devices including laptops, smart phones, music players, and gaming systems can see and join your Maryfi hotspot just like any other Wi-Fi access point and are kept safe and secure by password-protected WPA2 Encryption.

## Popular Use Cases

### At Home



Maryfi can easily act as a repeater for your home router, extending its range and providing Internet access wherever you need it. Connect to your home network, apply sharing settings to your home network, enter the same Wi-Fi name and password, and hit "Start Hotspot." Devices will automatically connect to the Internet through either your Maryfi hotspot or home router depending on proximity. Before you know it you can finally have Internet access in that impossible back room or basement. In addition, if you run Maryfi away from home with these settings, any devices that need to be bound to a specific network (such as Eye-Fi cards or wireless printers) will work flawlessly with no additional configuration no matter where you are!

## At Office or on the Road



Internet connectivity is a lifeline. Airports, Hotels, and Coffee Shops know this and charge accordingly, often as much as \$10-\$15 per day, per connection! These fees can quickly add up when traveling with friends or co-workers. The handful of hotels that do provide free Internet access occasionally only supply you with an Ethernet jack, which leaves Wi-Fi only devices and smart phones in the dark. Even the lucky few that have mobile 3G cards or adapters are limited to a single connection. Because Maryfi is free to download and use, users can save money on multiple Wi-Fi connections while on the road and still get all their devices online simultaneously.

### Offline Networking

Even without an active Internet connection, you can still run a Maryfi hotspot. This provides wireless access to shared folders or drives on your network as well as the ability to play LAN games with others.

## System Requirements

- ♣ Windows 7 Computer (32bit – 64bit) with Wi-Fi Card including.
- ♣ [Microsoft Virtual Wi-Fi update to Wireless Card.](#)

### Note:

*Before installing Maryfi to your computer it's very important to check your wireless card and turn the switch ON, and check wireless settings in Windows Mobility Center in Control Panel.*



## Maryfi Interface

### 1- Settings:

Wi-Fi Name: Name others will see for your hotspot.

Password: Password that you should provide others to get connected to your hotspot.

### 2- View Network Connections to Setup Internet Sharing:

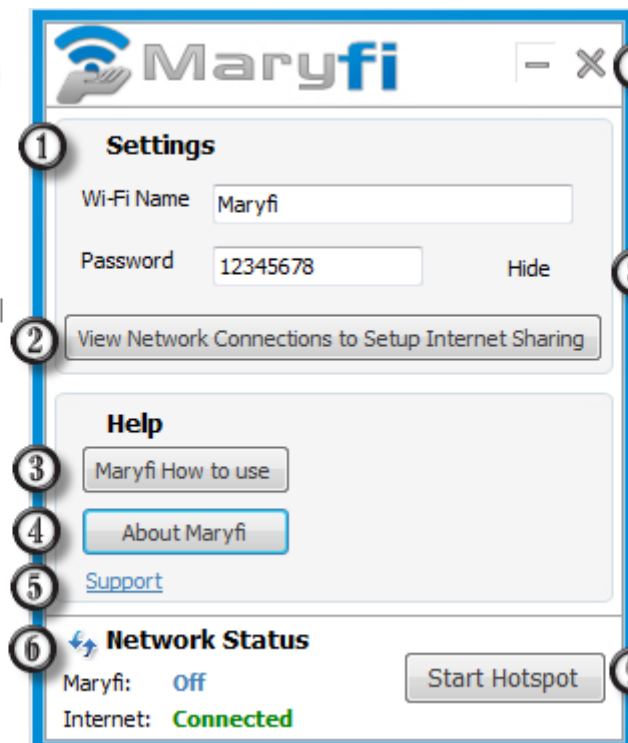
View all connections in your computer to share your Internet connection.

### 3- Maryfi How to use:

View Maryfi manual (you need Acrobat Reader).

4- **About Maryfi:** View Maryfi Credits.

5- **Support:** Get connected to MarySoft website.



### 6- Network Status:

Maryfi: identify Wireless hotspot if working (on) or not (off)

Internet: identify if your computer is connected to Internet (connected) or not (disconnected).

↻ Refresh network status.

### 7- Window Control Buttons:

— minimize Maryfi windows to notification tray

✕ close Maryfi after stopping hotspot.

8- **View/Hide:** View password/Hide password.

9- **Start Hotspot/Stop Hotspot:** Start/Stop your hotspot after saving new settings.

## Setup Maryfi Hotspot before starting

After download and install Maryfi to your Windows 7 computer, you need to make some configuration to your new Access point and your Internet connection you want to share.

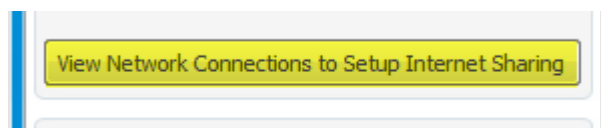
### Wi-Fi Settings

By default Wi-Fi Name (SSID) is **Maryfi** and password is **12345678** (you can view the password by clicking on View button), you may change these settings by simply entering the new values into the relevant textboxes and when clicking start hotspot/stop hotspot new settings will be saved.

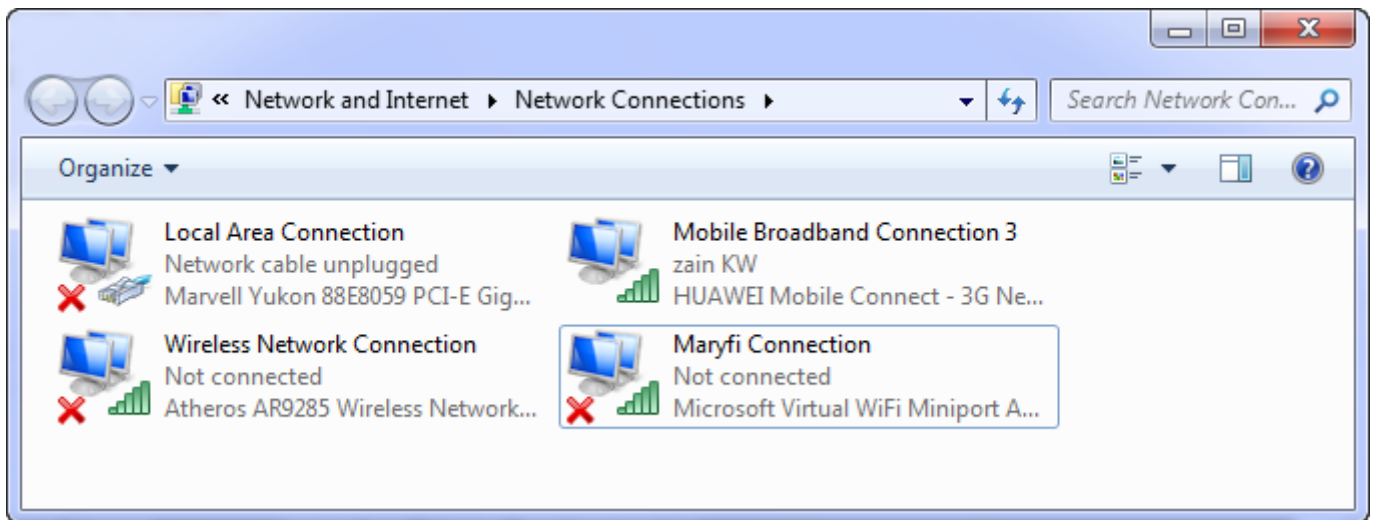
### Internet Connection Settings

Maryfi software enables you to make a virtual Wi-Fi that others can get connected to and get access to Shared Folders (Offline Mode), and to enable Internet Connection Sharing to the Users of your hotspot you need to do some modification to your Internet connection whether it's a DSL Connection, 3G Mobile Internet or even another Wi-Fi network.

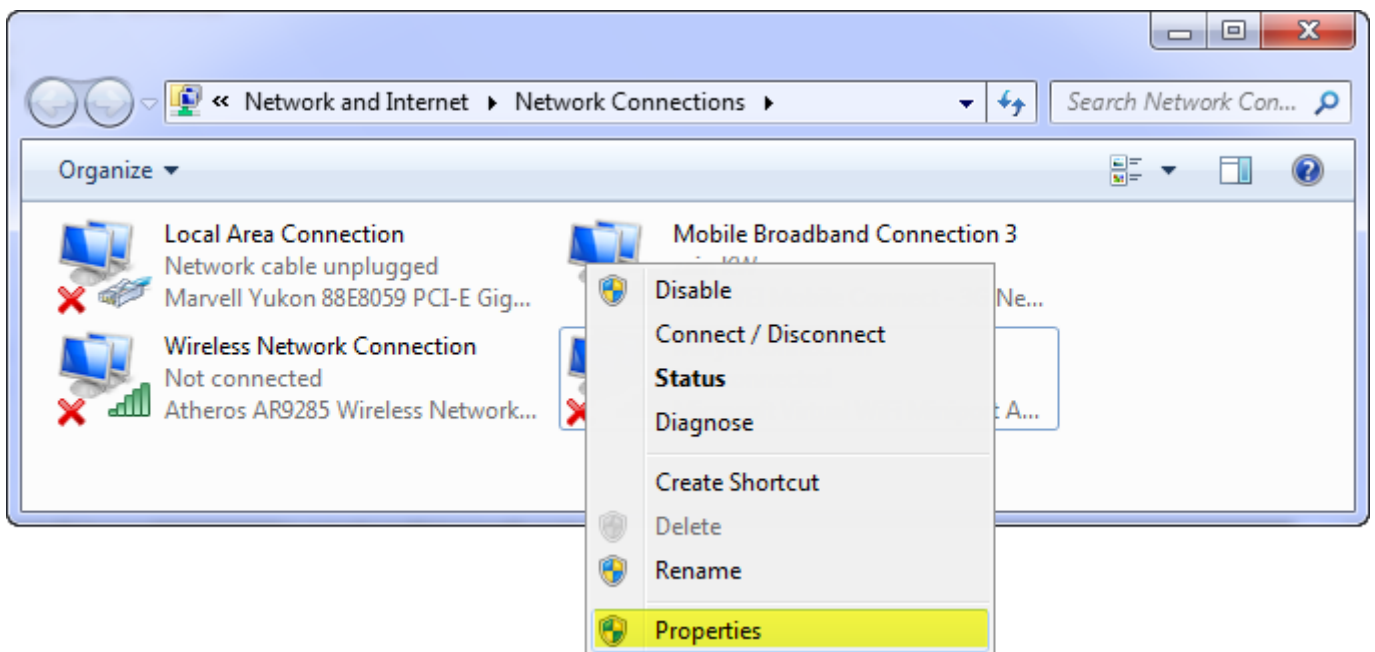
To Enable Connection Sharing click on the **View Network Connections to Setup Internet Sharing** button.



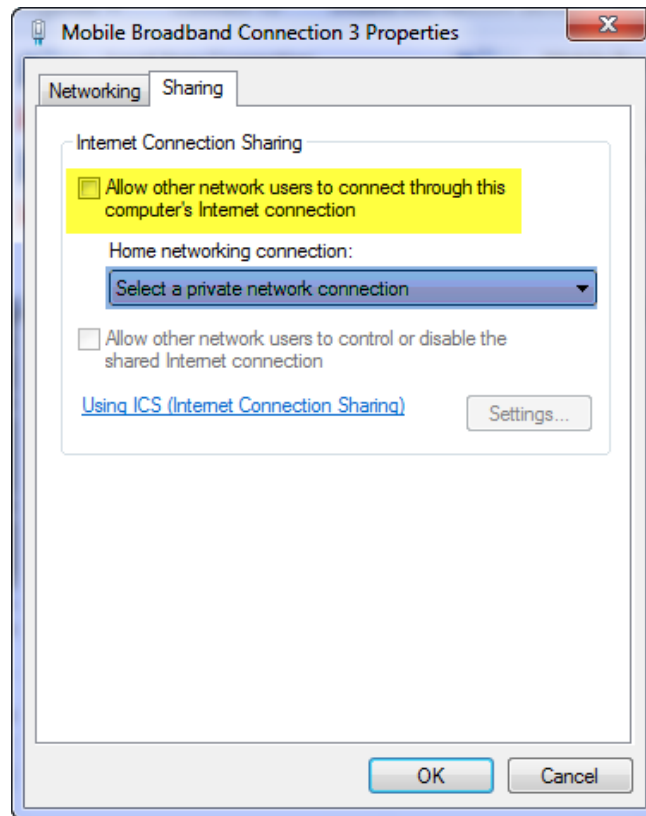
A window will come up. This window displays every connection you have in your computer (3G Mobile, Local Area Connection, Wireless Network Connection and your new Wireless Network Connection provided by Maryfi (**Maryfi Connection**))...etc.



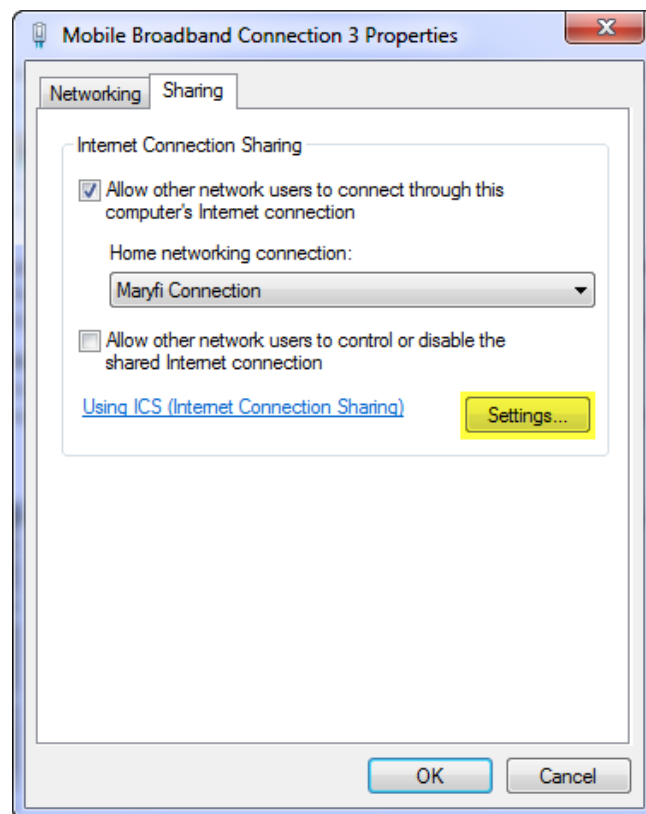
If you are thinking of sharing your Mobile Internet connection (Mobile Broadband Connection 3 for example, Shaun in the previous window), right click on its icon and choose properties.



The mobile connection properties window is coming up. Move to Sharing Tab in the top.

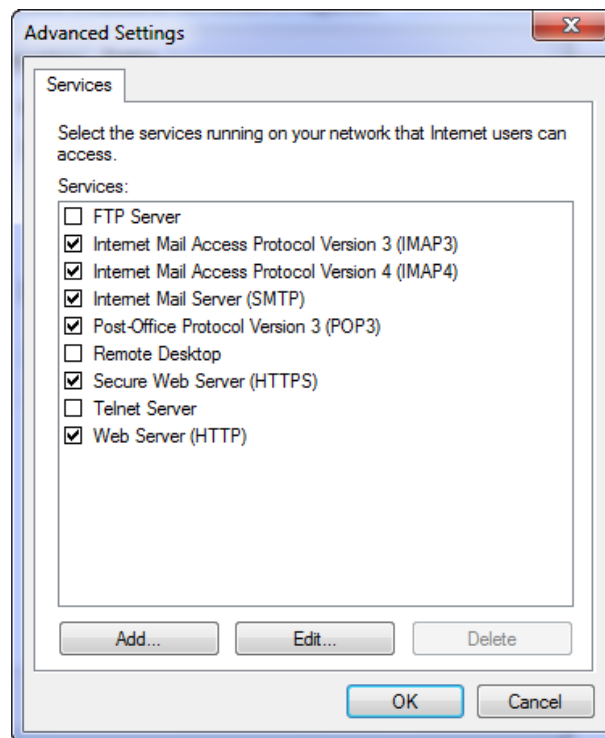


Check Allow other network users to connect through this computer's Internet connection (Yellow highlighting) and then click on select a private network connection (Blue highlighting) to choose Maryfi Connection.



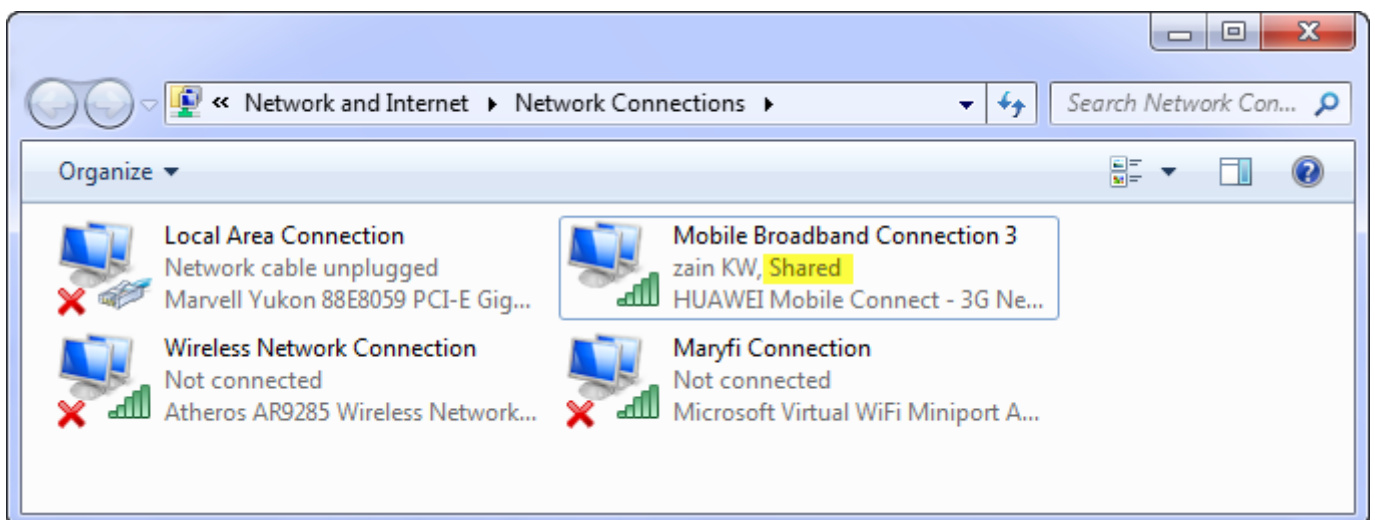


After that click on Settings button to choose services you want to share.



Check any service you like to share and then click ok button to close advanced settings Window, and on Ok button again to close the parent window (Mobile Internet Connection Properties).

After finishing of connection sharing your Network Connections should look like this one.



#### Note:

*You need to repeat Internet connection settings every time you want to change the Internet connection you are sharing. That means if you continue to share your mobile connection you don't have to do these changes anymore.*

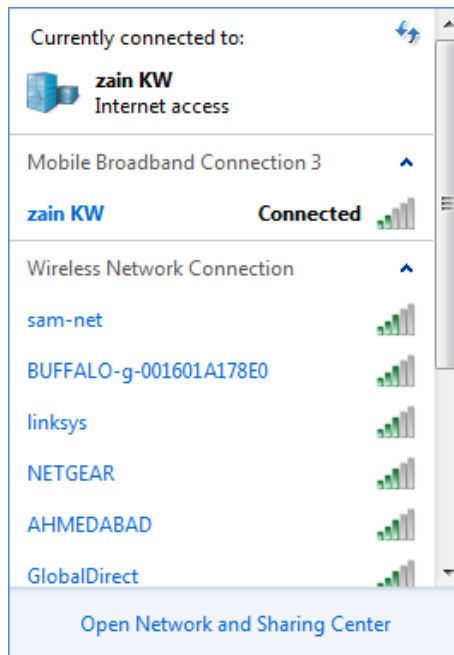
Now you are ready to start your new hotspot.

# Starting your hotspot

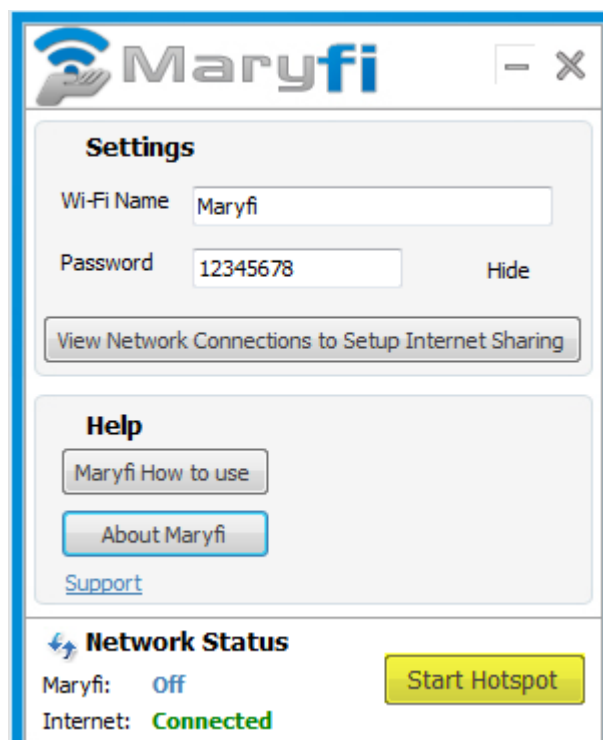
If we look to Notification Tray before starting our hotspot we'll see wireless icon points to every wireless connection you have.



By clicking on this icon you got this if you are connecting to internet using your mobile 3G connection.

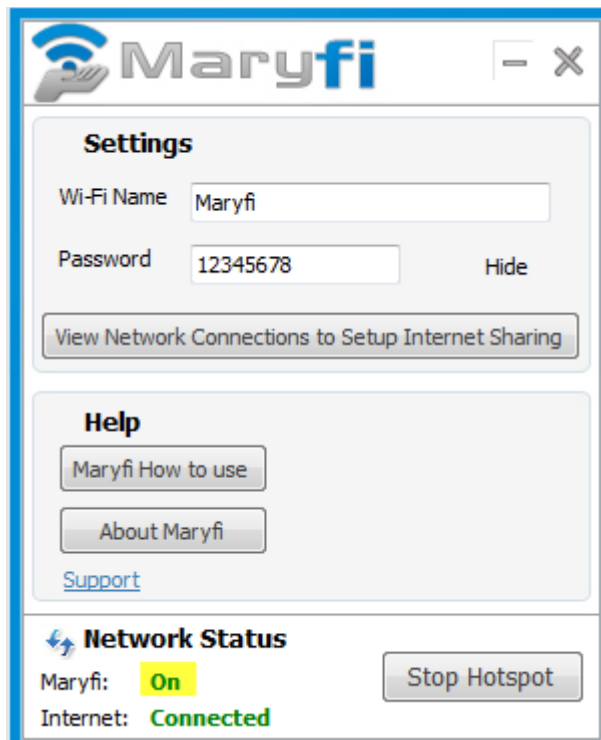


Now to start your Hotspot, just click on Start Hotspot button.

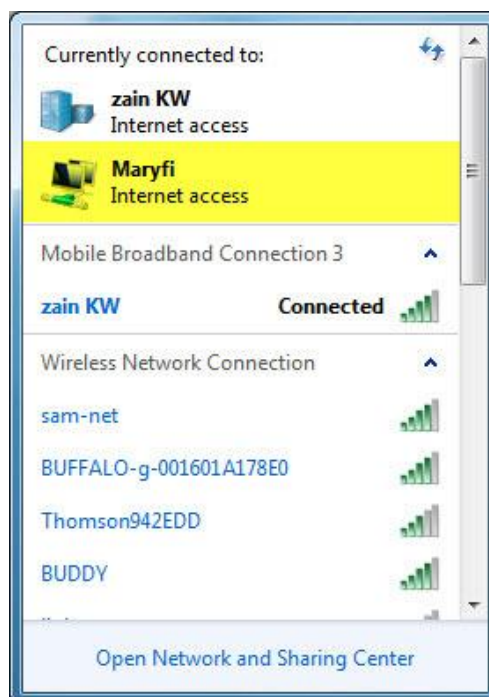




Wait a few seconds and you'll see Maryfi status changed to **On**



If you take another look to your wireless icon you'll see two connections, one your mobile connection and the other is your Maryfi connection, and the best of all there are two connections have access to the internet.



Now let your friends enjoy your internet. All you have to do is provide them with the password to get connected to your hotspot.